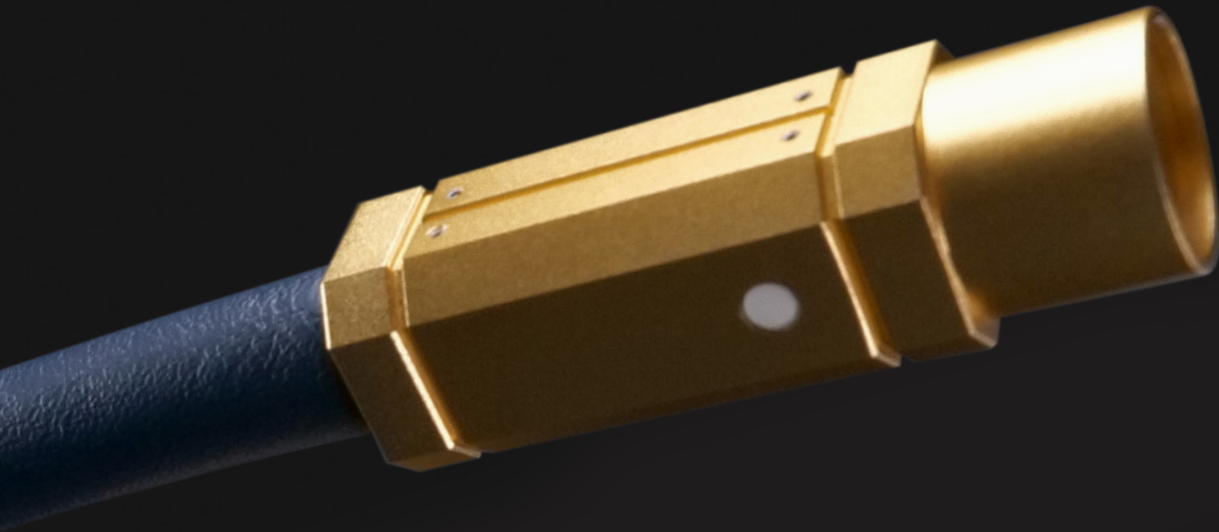


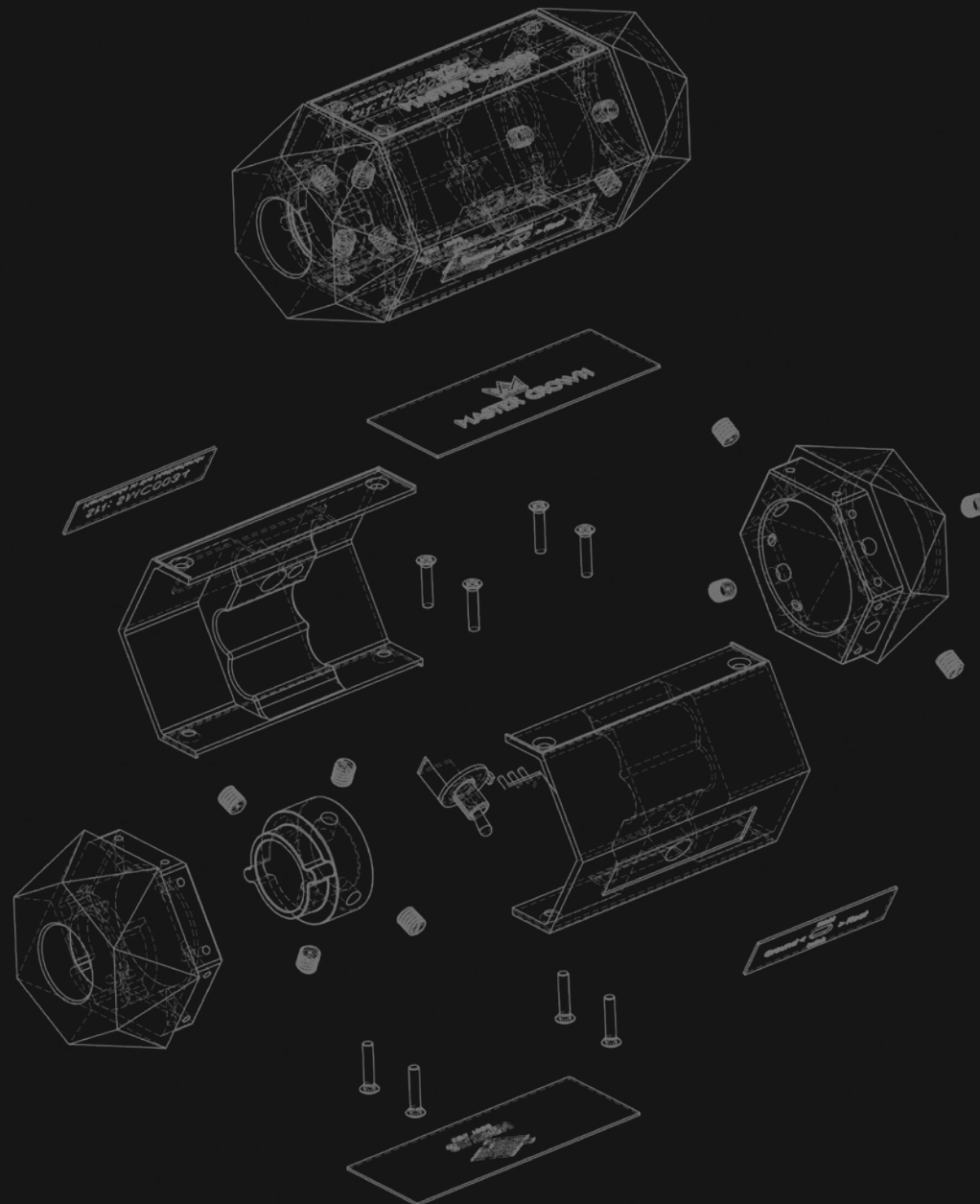


MASTER CROWN

Handmade in the Netherlands







A MAJESTIC MASTERPIECE

For over four decades, Siltech has been synonymous with uncompromising quality and unmatched performance in the high-end audio world. The Master Crown Series represents the apogee of our endless quest for perfection, setting new standards of excellence in the industry.

For our scientific engineering team, (Master Degrees and PhD's) it has been a challenge to solve the last frontier in cable design. It took almost a decade since our last flagship cable series, eventually discovering a new force affecting sonic performance. We immediately realized this is a level never heard before.

CRAFTSMANSHIP AND INNOVATION

At the heart of the Master Crown Series lies our revolutionary technology, engineered to deliver unbeatable performance and musicality. Each cable is diligently crafted with our proprietary S10 monocrystal silver conductors, precisely drawn from the purest silver possible for unmatched purity and audio transparency, and all Master Crown cables are enhanced by adding gold to the equation. Years of fundamental research, material science, magnetic field analysis, and innovations in cable construction have led to the best audio cable the world has ever seen and heard; Siltech's ultimate Masterpiece...

INTERCONNECT CABLE

MASTERING ALL DISTORTION EFFECTS

Perhaps the most challenging cable to realize another breakthrough in musical performance, was the interconnect cable. It's new technology is the result of many scientific findings, the most important being:

- 1)** The solid S10 monocrystal silver conductors are now constructed following the new Balanced ground principle, for both XLR and RCA cables, further lowering the low noise floor.
- 2)** MFD (Magnetic field distortions) related to the composition of conducting materials and insulators are also reduced further due to the new construction.
- 3)** Reduction of CSD (Current shielding distortion) effects, for less interference with the natural audio signal.
- 4)** Jitter reduction improves the Zero Crossing Distortion, greatly influencing the audible recognition of voices and instruments.

Just as important are the connectors, where the ultimate transfer of signal takes place. That is why all contacts are S10 monocrystal silver pins, gold-plated through a special direct plasma-plating process to further enhance sound quality. The clamping mechanism on the RCA connector is improved to avoid the risk of Eddy currents.

Lastly, Master Crown's Superior shielding switch allowing you to choose between directional grounding or lifting the shield connection all together, depending on your system and its surroundings.

These landmark steps in the pursuit of ultimate system optimization have led to Master Crown Interconnect; the most silent, distortion-free cable in the world.

- 4 high purity S10 monocrystal conductors for lowest distortion
- Balanced grounding and Zero Crossing Distortion
- Plasma gold-plated monocrystal silver XLR and RCA contacts



SPEAKER CABLE

DYNAMIC MASTER

For a loudspeaker cable low loss and low distortion are key to their performance, and the cable needs to get the best out of all types of equipment. By optimizing all parameters, we are sure our cables always will sound incredible on just any combination of audio gear.

By adding MFD (magnetic field distortion) and CSD (current shielding distortion) removing technology, Siltech's new generation Master Crown creates an unbelievably powerful sound, with a high level of information, precision and above all a fluid dynamic sound that immediately grabs your attention.

Yes, it will handle 10kW, but more importantly, it's able to let you hear 8 Femtowatts (0.000000000000008 Watt) of sound too. This mind-blowing range enables every micro detail (or better; Femto detail) to be heard, making your sound ultra realistic and adding a layer of fine detail and authenticity in any situation.

As the final ends of the signal transfer are extremely important, the S10 monocrystal silver spades on Master Crown speaker cables are gold-plated with direct plasma-plating for additional depth and body to the sound.

Master Crown speaker cables will reveal the best possible resolution out of any system, ensuring you will experience music like never before.

- 6 ultra-thick s10 monocrystal conductors
- Perfectly symmetric hexagon construction
- Plasma gold-plated monocrystal silver-spades



POWER CABLE

THE MASTER OF POWER

Power cables have an unexpectedly big audible effect on the reproduction of music. Magnetic leakages cause distortion in particular frequency ranges, inducing small distortions which are unrelated to music but affect all connected electronics and other (mainly interconnect) cables nearby. Furthermore, those distorted currents cause saturation in many power cords resulting into audibly colored sound at these peak currents.

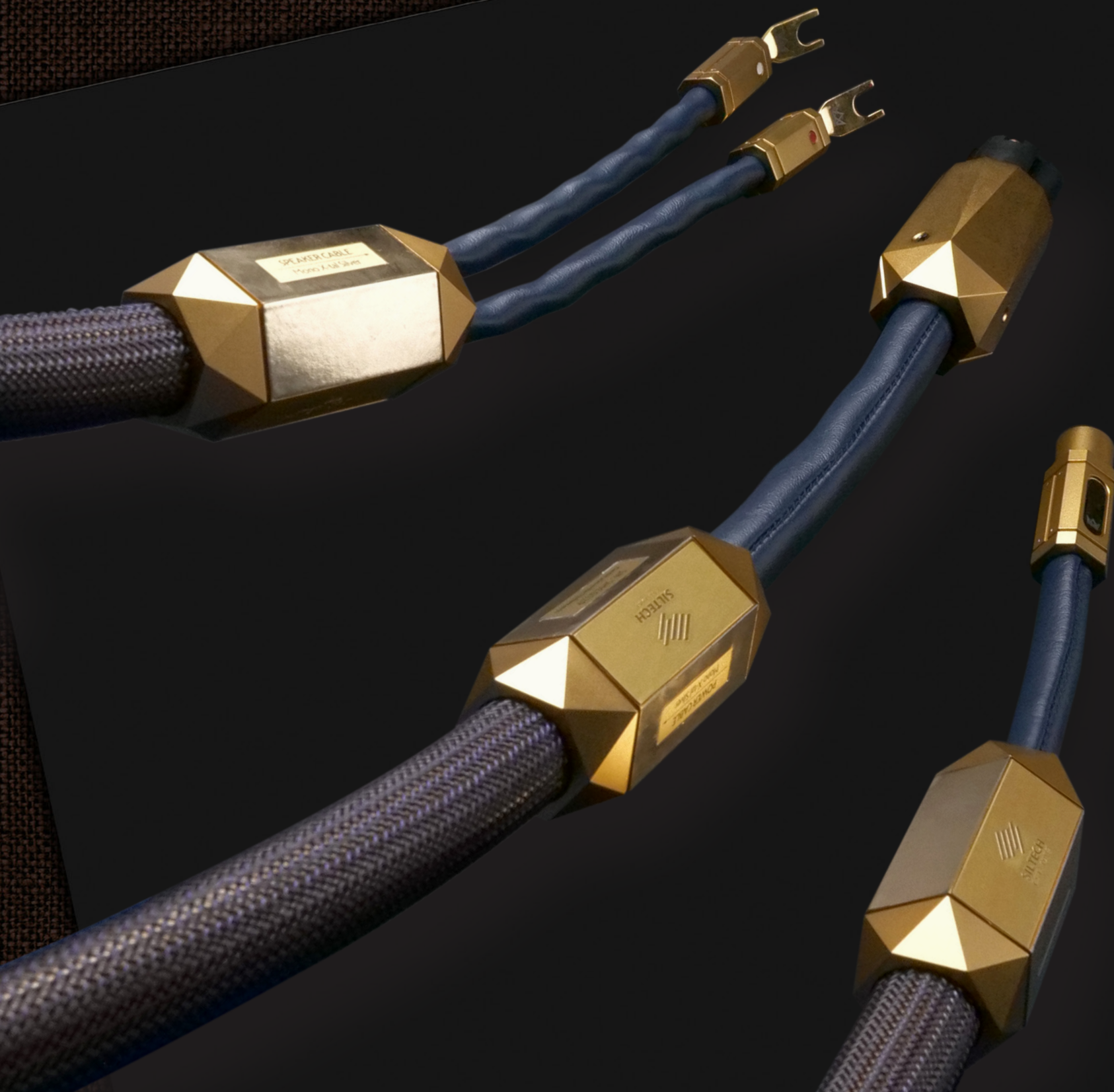
Even small electronic devices may have repetitive peak current of 1 Amp while only taking 10 watts of energy out of your AC mains. During development of the power cables, our research group uses advanced software like COMSOL Multiphysics and the world's most advanced measuring equipment to minimize the effects of these peak current distortions. This leads to extremely high levels of power integrity and an astonishing subjective and objective performance.

The power cable's special grounding even removes the need for ground lifting, often done by audiophiles to improve the sound. Siltech's new 18 conductor configuration consisting of both S10 monocrystal silver and G9 silver-gold wires minimizes signal loss and distortion, and eliminates external interference.

The elimination of harshness, complete lack of induced distortion and subsequent bass stability creates a new ultra-realistic feel to the music: A true new Master of Power.

- 18 conductor configuration with S10 monocrystal silver & G9 silver-gold wires
- Pure silver contacts on power connector
- Maximum power integrity & ultra-realistic music





THE MASTER OF ALL

Every successor, every new Siltech model has to surpass the previous generation of cables by a wide margin. We believe it is the key reason for our long worldwide success story.

Master Crown is not a step, or an incremental improvement; it's a huge breakthrough – it is superior to any other cable in each and every performance parameter, some of which are only revealed by the most advanced simulations and the most sensitive measurement apparatus in the world.

MAGICAL MUSICALITY

However, in high end audio the most sensitive and most important measurement tool of all, the human ear, is what truly reveals the beauty and magnitude of the Master Crown's performance.

No other cable measures as accurately as the Master Crown and no other cable sounds as musically engaging and realistic. The Master Crown Series surpasses conventional cable design, delivering incomparable audio clarity, sound depth, and musical precision. From the delicate intricacies of a solo piano to the thunderous crescendos of a symphony orchestra, these cables breathe life into every note, every chord, and every musical moment.

**Welcome to a world where music comes alive in all its glory.
Welcome to the new Master.**



MASTER CROWN







MASTER CROWN



SILTECH
EST. 1983

Handmade in the Netherlands